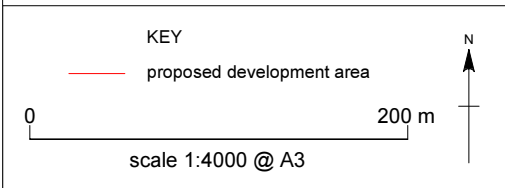
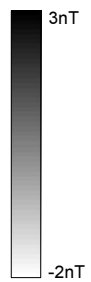
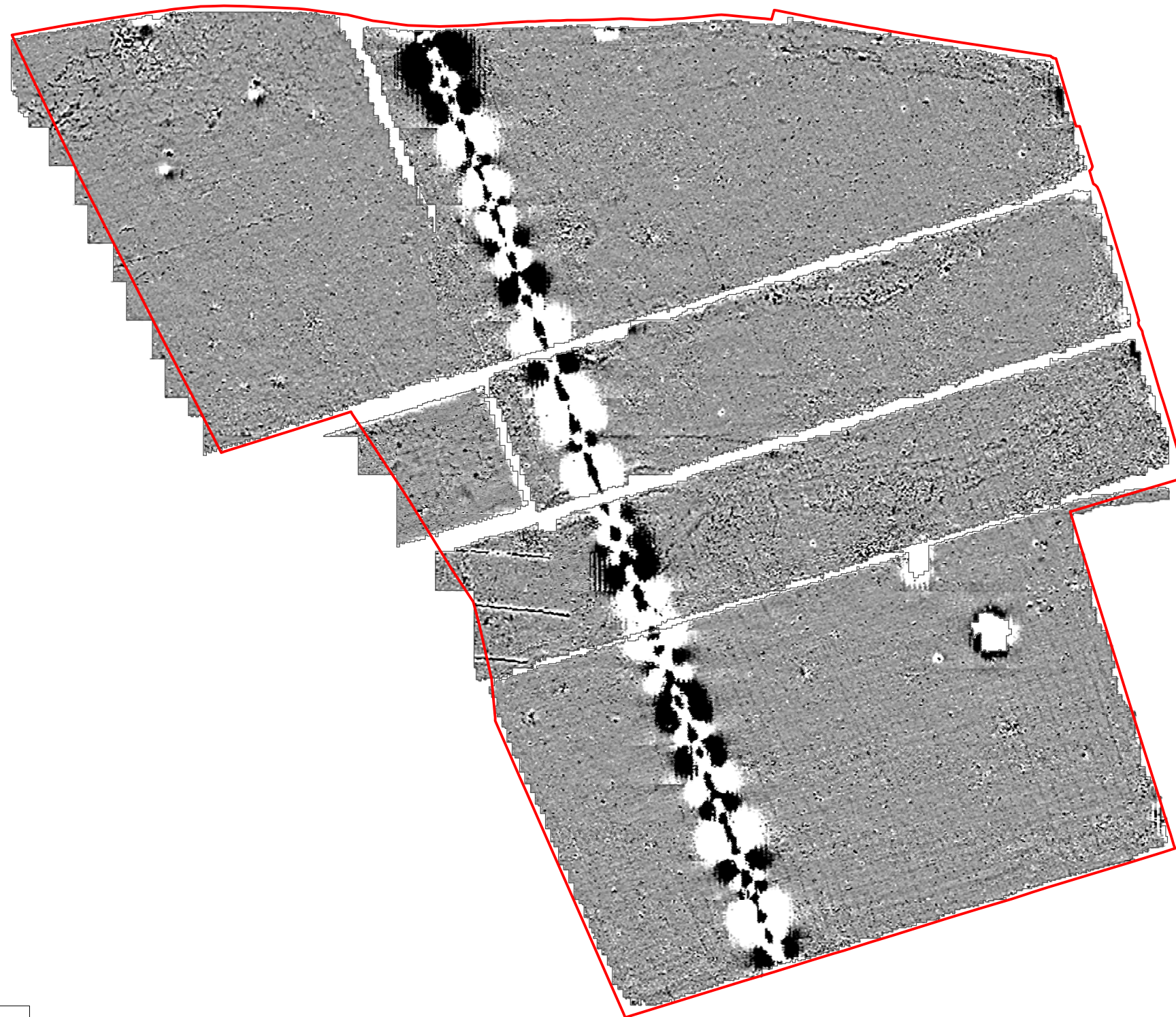
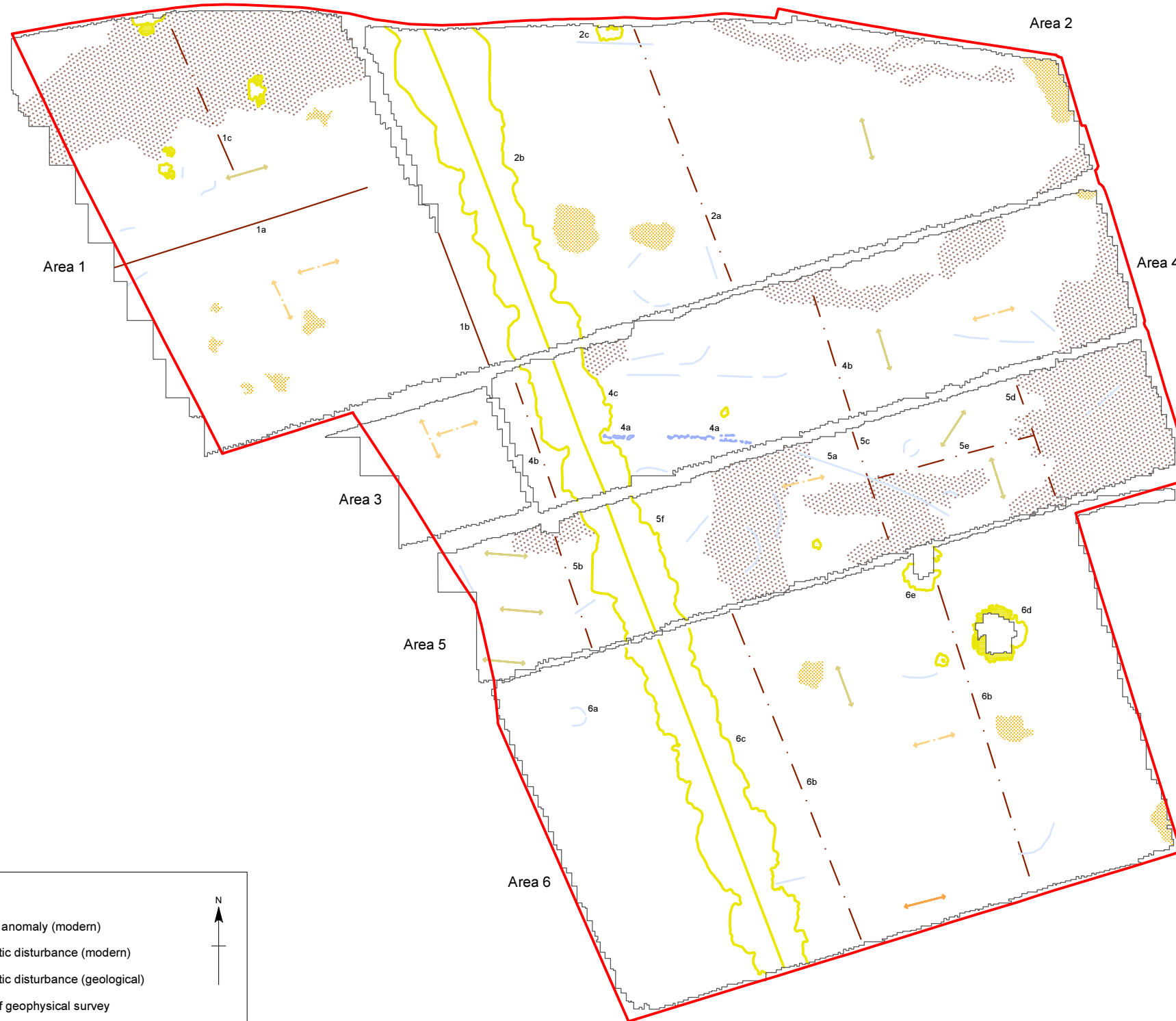


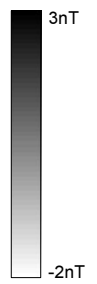
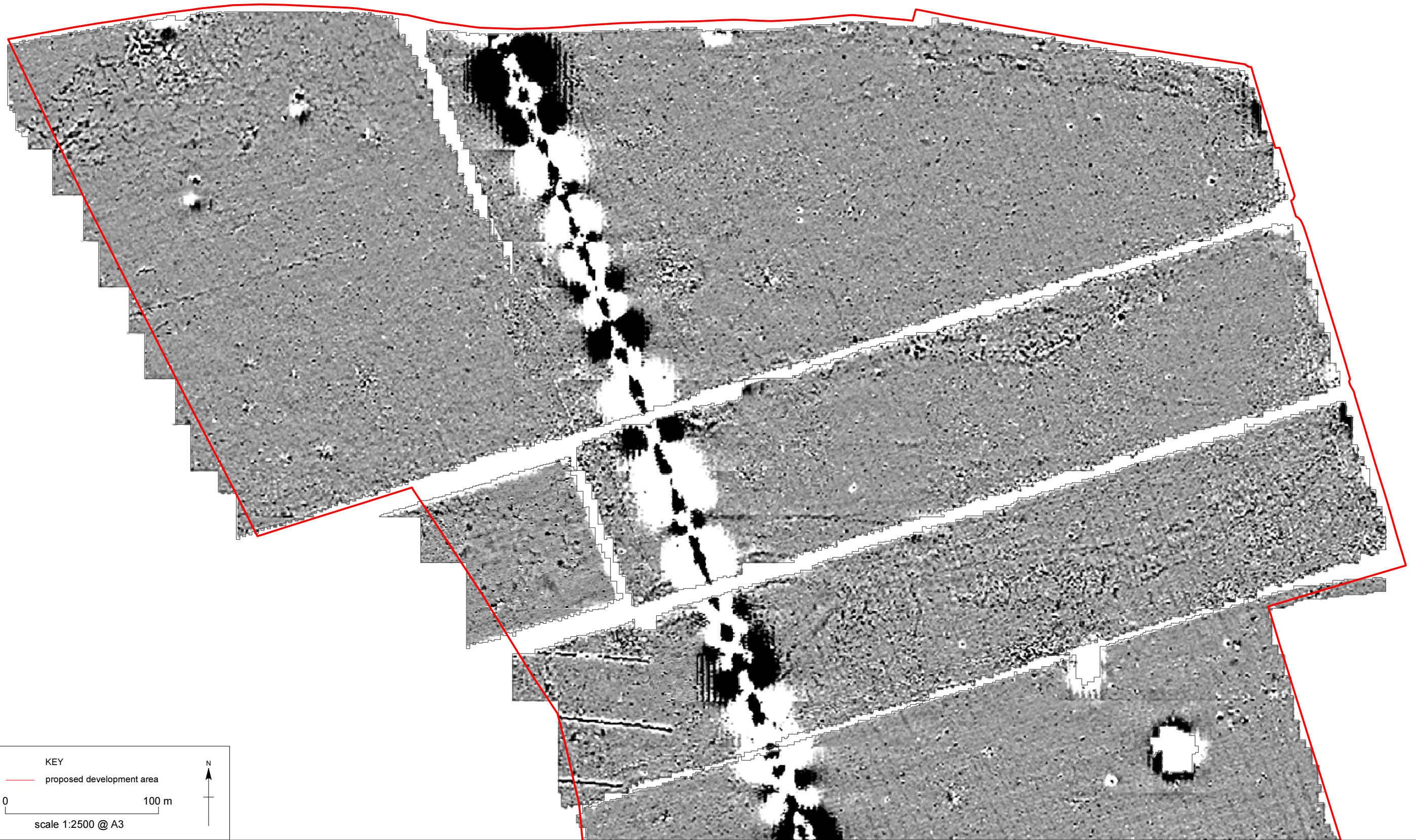
*Sweetbriar Farm: unprocessed greyscale plots of gradiometer survey results*



*Sweetbriar Farm: processed greyscale plots of gradiometer survey results*



Sweetbriar Farm: interpretation of gradiometer survey results



KEY

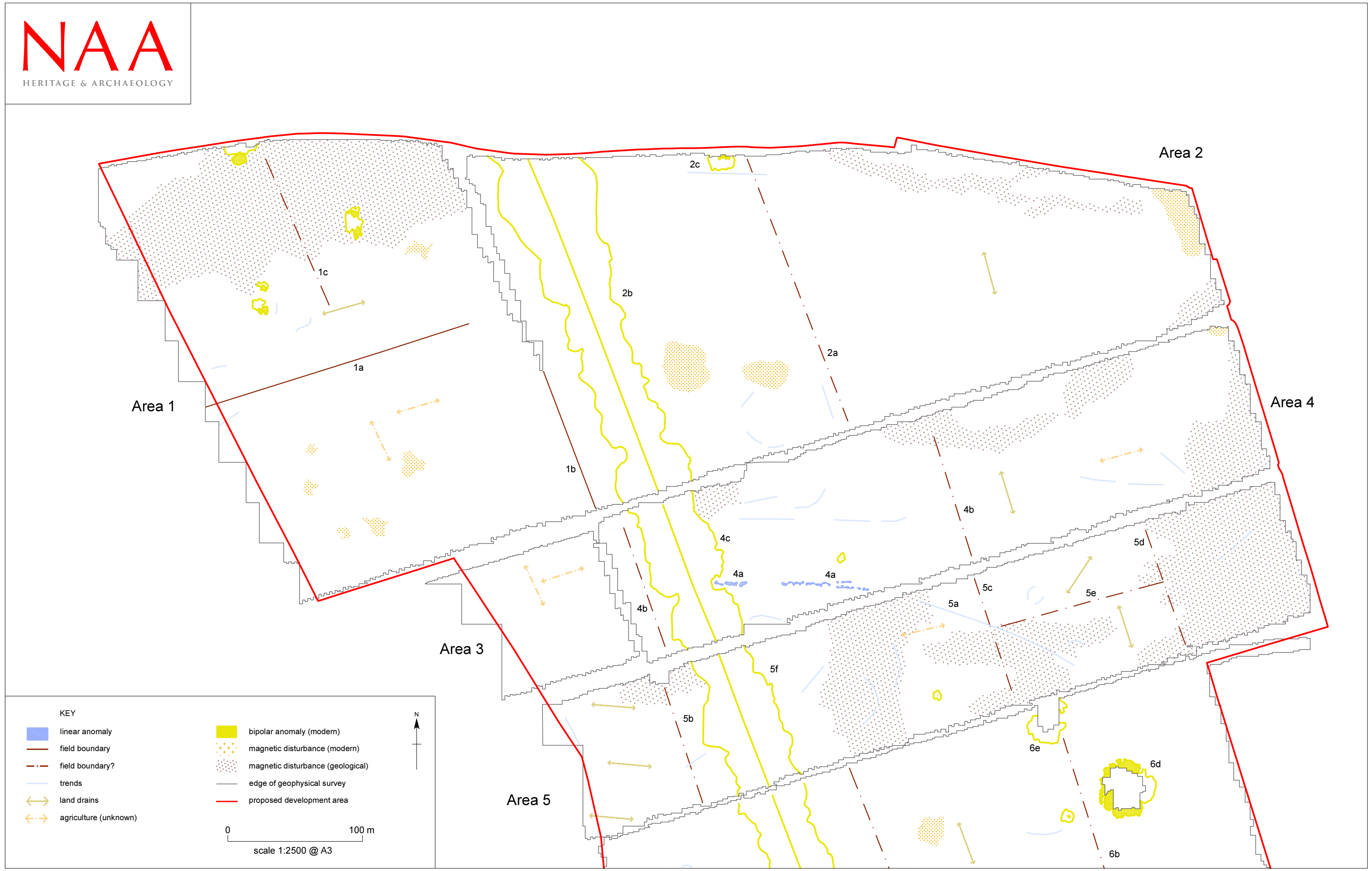
— proposed development area

0 100 m

scale 1:2500 @ A3

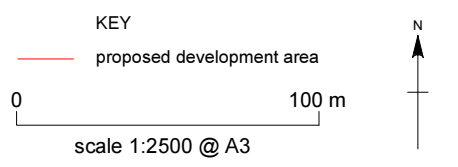
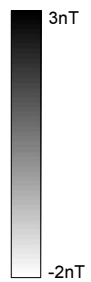
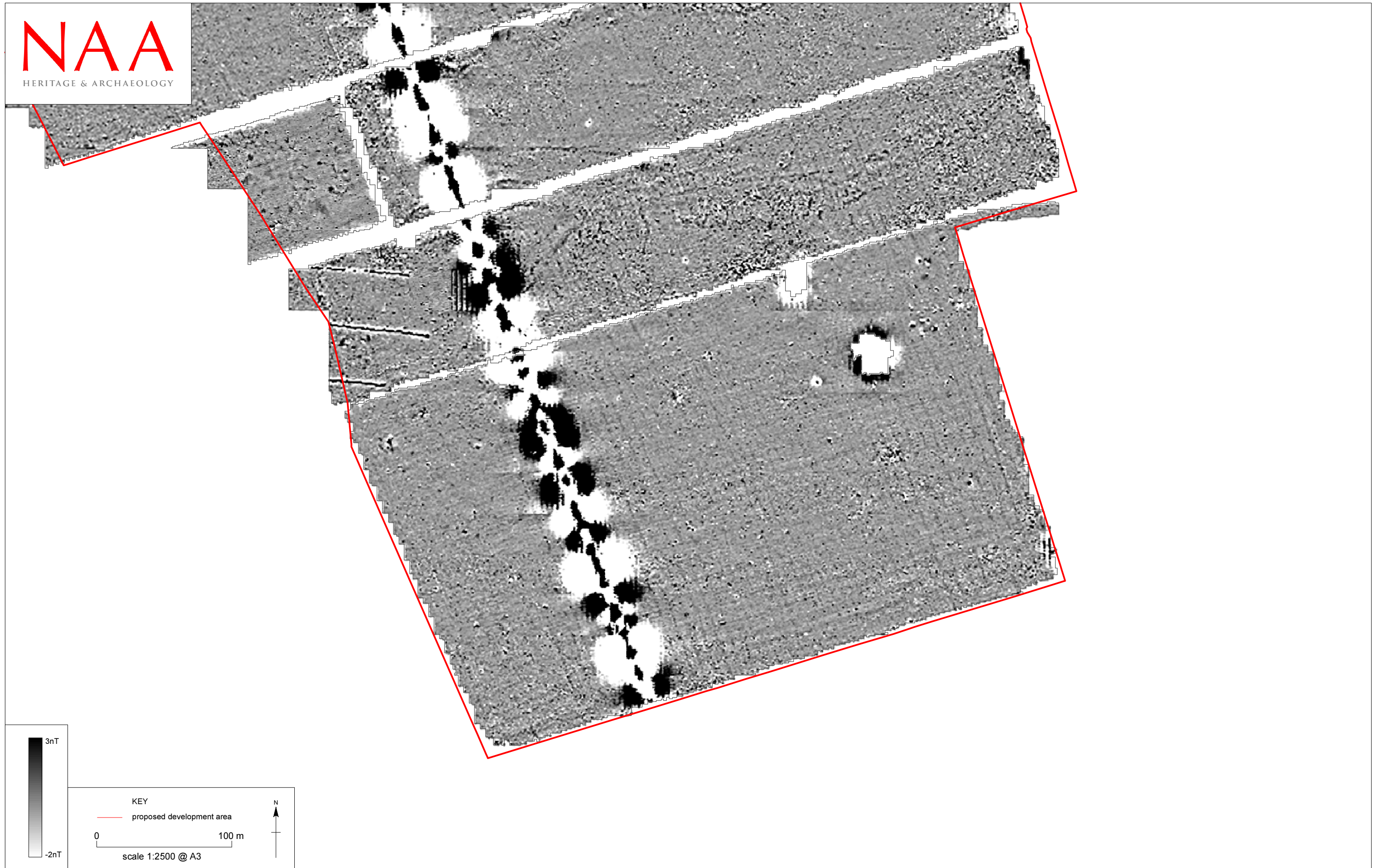
N

Sweetbriar Farm: processed greyscale plots of gradiometer survey results - Areas 1, 2, 3, 4 and 5

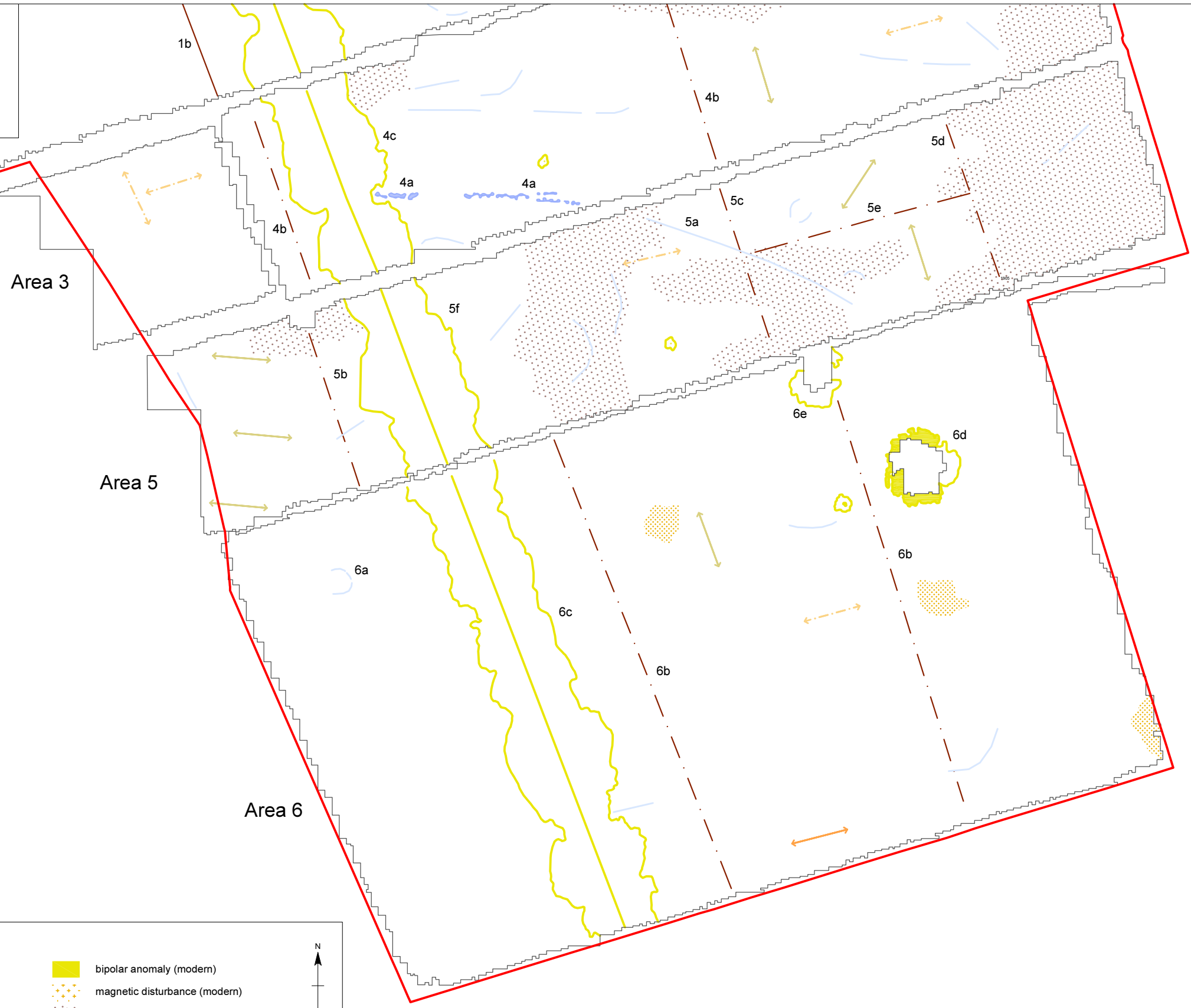


Sweetbriar Farm: interpretation of gradiometer survey results - Areas 1, 2, 3, 4 and 5

Figure 7



Sweetbriar Farm: processed greyscale plots of gradiometer survey results - Areas 5 and 6



Sweetbriar Farm: interpretation of gradiometer survey results - Areas 5 and 6