

Solar Energy

Support for solar is the highest it has ever been – it's a clean energy source for our National Grid.

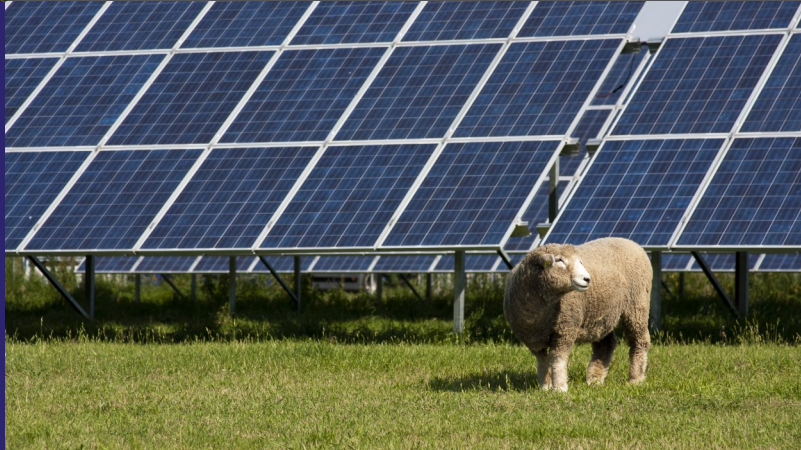


Our solar farms are quiet, still, nature friendly and produce no emissions. They are designed with local topography in mind to have minimal visual impact, and where panels can be seen we provide screening in the form of native trees and hedges.

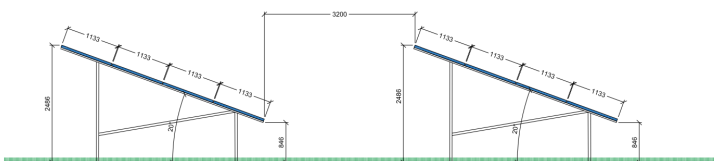
There will be a 5m gap between the site border hedge and our fence, and our panels are then a further 4m inside this fence. So the panels will be about 9-10m from any public roads or paths.

Solar energy does not mean we have to take land out of production – it just means we can diversify land use, harvesting renewable energy whilst supporting wildlife and conservation grazing. We welcome beekeepers to get in touch to help diversify the land use even further.

Solar farms give the land beneath them an opportunity to rest, improving soil quality for when the land is returned to agricultural use.



Our panels are ground mounted, installed using pile driven technology which limits the impact on the land. They're installed 80-90cm off the ground at the base with a total height of no more than 3m. Raising the panels off the ground allows sheep or other small flocks to be grazed underneath them. As well as benefitting local ecosystems, conservation grazing helps to control the height of the undergrowth surrounding the panels, meaning less machinery is needed for maintenance.



- The benefits of reduced CO₂ from generating electricity by solar panels outweighs the CO₂ released from their construction and transportation within 2-5 years.
- Solar panels are made of widely recycled materials, and we are part of a solar panel recycling programme that ensures all panels used on our solar farms are effectively recycled.
- Lightrock Power condemn and oppose any abuse of human rights. A UK industry supply chain statement can be found [here](#).